



# UniFLEX® 45 Universal Electric Strike/Door Release

## UniFLEX™ Series Multi-Frame-Application Electric Strike

- **Centerline Electric Strike**
- **4 Interchangeable Application Faceplates**
- **Full Monitoring is Standard, Including:**  
**Latched and Unlatched Status**  
**Keeper Closed and Deadlocked or Unlocked**
- **Keeper Open Status Optional**
- **Reversible Failsafe/Failsecure, no disassembly**
- **1/4" Horizontal Alignment Adjustment**
- **Plated Architectural Finishes Available**

The SDC UniFLEX Electric Strike is Centerline Latch Entry\* strike designed for use with Cylindrical and Mortise locksets with up to 3/4" (19mm) throw latchbolts.. The quality construction makes the 45 series ideal for high traffic applications. The compact low profile design enables quick and easy installation where jamb space is limited.

**\*Centerline Latch Entry:** The latch must enter at the strike "Centerline" located exactly between the top and bottom of the strike faceplate. Refer to strike installation instructions and template to determine strike location prior to frame preparation for New and Retrofit installations. See SDC strike template and installation instructions for both retrofit and new installation details.

### Features

- For 5/8" latch or 3/4" latch with 1/8" door gap
- Latch position status standard
- Keeper closed & deadlocked/unlocked status standard
- Field selectable failsecure - failsafe
- Field selectable voltage, 12/24V AC/DC
- 1/4" Horizontal alignment adjustment
- Low profile, 1-3/16" deep
- Plug-in wire connectors
- Mounting tabs
- Non-handed
- All stainless steel parts with durable die cast body for corrosion resistance
- Fewer moving parts for maximum life
- Stainless steel standard with square corner faceplate
- Aluminum standard with radius corner faceplate
- ANSI/ BHMA A156.31, Grade 2



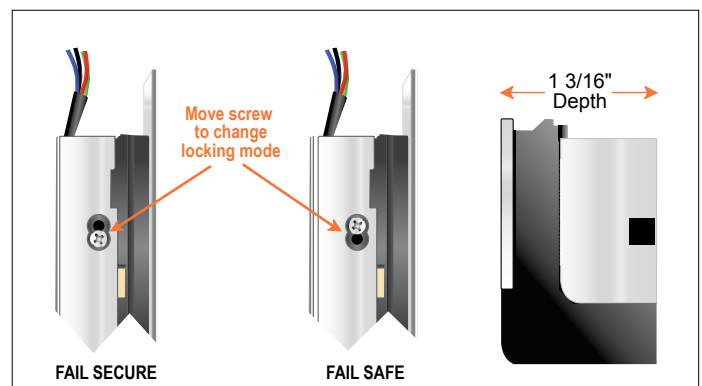
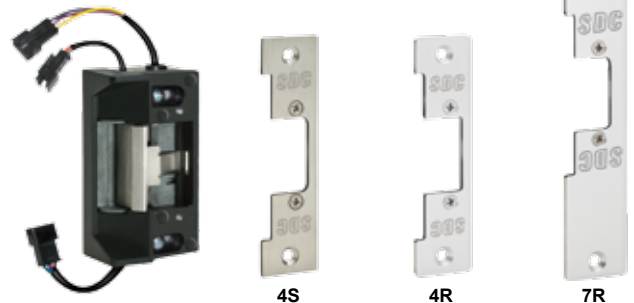
SDC Patented

US Patent: 7,540,542



### UniFLEX™ 45-A

Multi-Application strike with three faceplates for wood, aluminum and hollow metal frames



**5 YEAR LIMITED WARRANTY**

**SECURITY DOOR CONTROLS**

sdsecurity.com  
service@sdsecurity.com



Price & Installation

## Uni-Flex 45 Series Electric Strike

### How to Order

**Model**



- 45-4S** 4-7/8" x 1-1/4" square corner faceplate
- 45-4R** 4-7/8" x 1-1/4" radius corner faceplate
- 45-6R** 6-7/8" x 1-1/4" radius corner faceplate
- 45-7R** 7-15/16" x 1-7/16" radius corner faceplate
- 45-A** Included: One 4-7/8" square corner faceplate  
One 4-7/8" radius corner faceplate  
One 7-15/16" radius corner faceplate

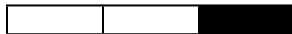
Latch Position Status Standard  
Keeper Closed and Deadlocked/Unlocked Status Standard

**Finish**



- U** 630 Dull Stainless Steel (standard with 45-4S)
- V** 628 Dull Aluminum (standard with 45-4R, 45-6R and 45-7R)
- Y** 335 Black Anodized
- D** 606 Dull Brass
- H** 613 Oil Rubbed Bronze

**Options**



- K** Keeper open/closed status
- RMB** Buzzer 12/24V AC/DC operation

**Electrical Specifications**

**Dual Voltage Coil:** 200/100mA @ 12/24V DC  
140/70mA @ 12/24V AC  
**Latch Position Status (std):** SPDT, Dry 3Amp @ 30V  
**Keeper Closed & Locked Status (std):** SPDT, Dry 3Amp @ 30V  
**Keeper Open/Closed Status (optional):** SPDT, Dry 3Amp @ 30V

**Dimensions**

- 45-4S / 45-4R:** 1-1/4" W x 4-7/8" H x 1-3/16" D  
(31.8 W x 124 H x 30.1 D mm)
- 45-6R:** 1-1/4" W x 6-7/8" H x 1-3/16" D  
(31.8 W x 175 H x 30.1 D mm)
- 45-7R:** 1-7/16" W x 7-15/16" H x 1-3/16" D  
(36.5 W x 201.6 H x 30.1 D mm)

